



CUSTOM DESIGNED & QUALITY BUILT
HOMES • ADDITIONS

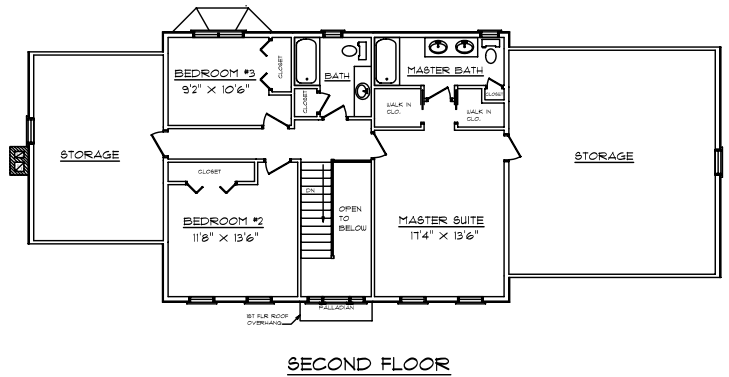
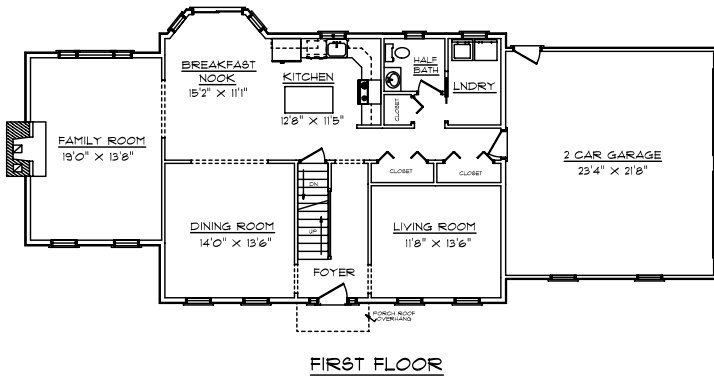
Tender Loving Care that puts YOU first!

Bolton Colonial

Description:

- 28'0" x 36'0" / 20'0" x 14'0"
- 2318 sqft & 2 car garage
- 3 Bedrooms, 2 1/2 baths
- Attached Family Room
- Walk out angled bay in rear
- Open Foyer
- Ample storage

Photograph may differ from floor plan



Cost:

Advertised Erected Shell:	\$ 89,510.00*
Sub-Contracting Estimates:	\$ 104,675.00**
Excavation/Septic/Sewer/Well/Water:	\$ <u>Variables not known</u>⁺
Total Cost:	\$ 194,185.00 ⁺⁺

Cost Per Square Foot (House/Garage): \$ 83.80

* Includes blueprints, materials & labor.

** Items included in Sub-Contracting Estimate: Foundation, concrete floors, hatchway & stoop(s), fireplace/masonry, plumbing, heating, electrical (NEC), insulation, gutters & leaders, sheetrock, interior package (cabinets/vanities/trim/doors), interior package labor, finished stairs, finished floors, permits, lighting fixtures (interior & exterior).

+ Items **NOT** included in Estimate: Land, excavation, septic or sewer hook-up, well or water hook-up, surveying/engineering, foundation damp-proofing, basement & garage grading, painting/staining (interior & exterior), appliances, clean-up at job site, landscaping, driveway (gravel & apron), miscellaneous decorating.

++ Prices may vary with location & may change without notice due to economic variables.

Copyright © TLC Homes, Inc. 2009